

## Sweep Frequency Response Analyzer



**PFRS-25**

- Wide dynamic Ranger > -150 dB (+10 dB to <-140dB)
- Short test time per trace <20 Secs (20 Hz 2 MHz)
- Quick Test for connection integrity check : 6 secs
- Open Ground loop detection for reliable test data
- USB and Bluetooth communication
- Test voltage 0.2-24 V P-P
- Frequency Range 0.1 Hz—32 MHz
- Light weight field portable enclosure (10.0 Lbs.)

### Introduction:

The PFRS-25 compares a transformer's frequency response to previous results to verify its mechanical integrity. Each transformer has a unique frequency response & changes in transformer mechanical geometry can modify it. Movement or transit can cause these alterations. If the transformer has excessive current due to internal or external fault, the physical shape can vary. Power transformer issues can be detected by fingerprinting the transformer's frequency response:

- Core movements
- Shorted turns or open windings
- Winding deformations
- Winding connection problems
- Broken clamping structures

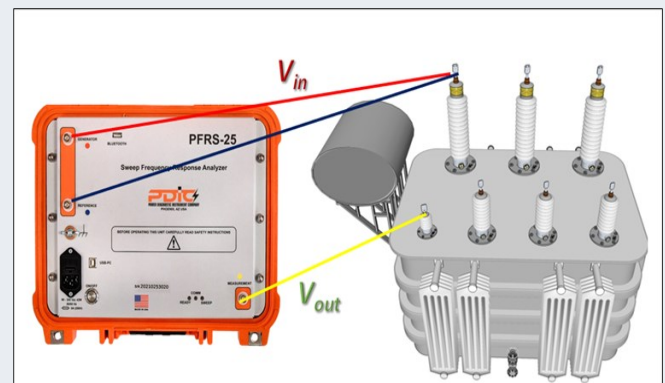
### Measuring Principle:

The PFRS-25 injects the reference voltage at one end of the winding and measures voltage at the other end of the winding for a large frequency range. The ratio of measured voltage to reference voltage is plotted. The test plot can be compared to prior or reference results. Variation may indicate transformer damage. Frequency response analysis can detect turns-to-turn short circuits, transformer oil condition, core magnetization as well as winding mechanical deformation.

### Applications

Transformer is a complex RLC network. Any transformer fault can change mechanical configuration. Mechanical configuration changes will alter transformer's RLC network. The frequency response will alter due to these changes. PFRS-25 can identify the following transformer defects by comparing the trace to the reference trace or previous test traces.

- Shorted turn
- Winding movement/looseness
- Hoop buckling
- Magnetized core
- Core looseness
- Core grounding

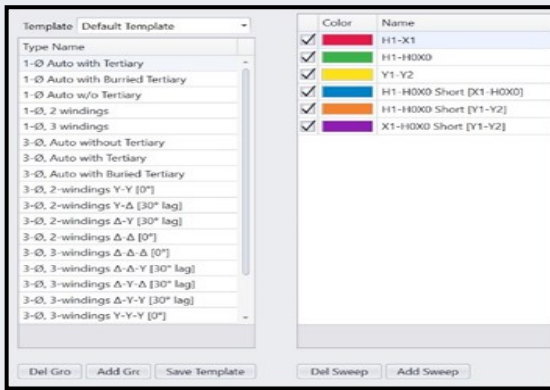


**PFRA Software**

PDIC's user-friendly PFRA software controls the PFRS-25 and analyzes test results. It can compare test results to past tests, transformer's reference traces as well as results from a similar transformers.

**Test Plan Templates**

Common transformer test plan templates are available in the PFRA. This speeds up transformer test plan creation for increased productivity. Also adding a new test plan by altering or starting from scratch is simple and easy



**Graph and Data Views**

The PFRA software can display the results in Amplitude, phase angle, impedance and test data with respect to frequency.

Frequency Hz	Magnitude dB	Phase *	Impedance Ω
[1] 20.000 Hz	-15.90861	-1.99500	0.009
[2] 20.962 Hz	-15.90684	-2.06400	0.009
[3] 21.971 Hz	-15.91116	-2.10500	0.009
[4] 23.028 Hz	-15.91037	-2.18200	0.009
[5] 24.136 Hz	-15.91050	-2.24400	0.009
[6] 25.297 Hz	-15.90659	-2.31600	0.009
[7] 26.514 Hz	-15.90954	-2.40400	0.009
[8] 27.790 Hz	-15.91557	-2.49300	0.009

**Test Voltage**

The test voltage is settable from 0.2-24 V p-p allows user to set the test voltage to the value used for previous tests if it is different than the typical 20 V p-p.

**Customized Number of Test Points**

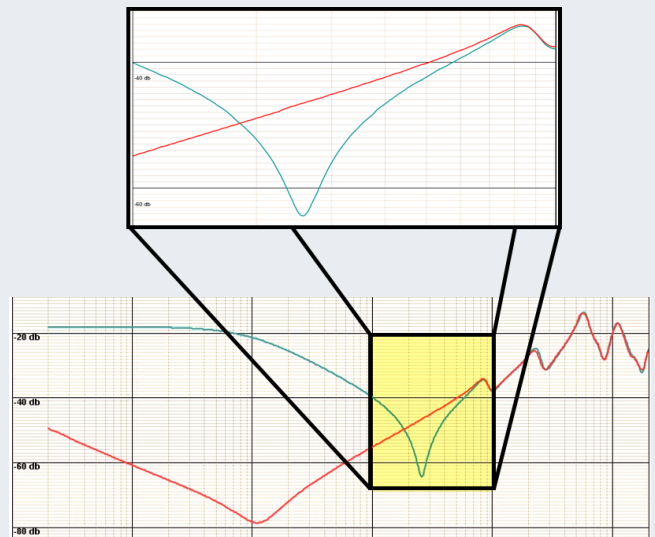
The number of test points between a defined frequency band can be customized. The maximum number of test points for a defined trace can be set up to 32,000.

**Customized Trace Data Acquisition**

The trace can be configured to start from high frequency to low frequency or low frequency to high frequency to match the process followed for the previous trace.

**Trace Zoom Feature**

For simple analysis, drag a square with the computer pointing device around any region of the trace to zoom in. When the pointing device is on the trace, the software displays the frequency (x axis) and dB value (y axis) to enable users compare traces.

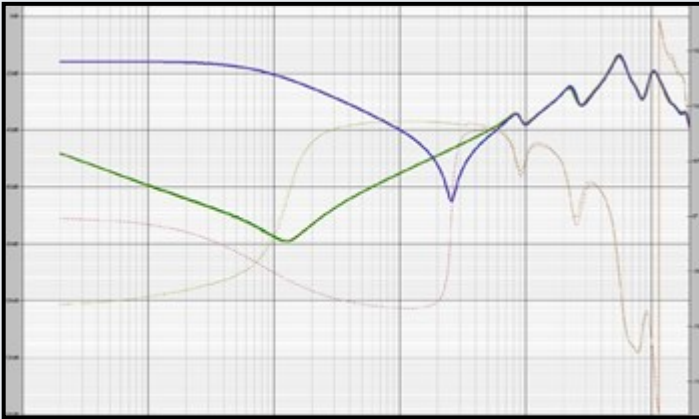


**Test Data Import Feature**

The PFRA software can import test results of all other manufacturers of SFRA instruments. It can also import test results in IEC, CIGRE or CSV format.

**Trace Customization**

The PFRA software does not limit the number of traces that can be displayed. All or individual traces can be shown or hidden and each trace's color can be configured for easy analysis. The trace display line thickness can be customize for better visibility and easy analysis.



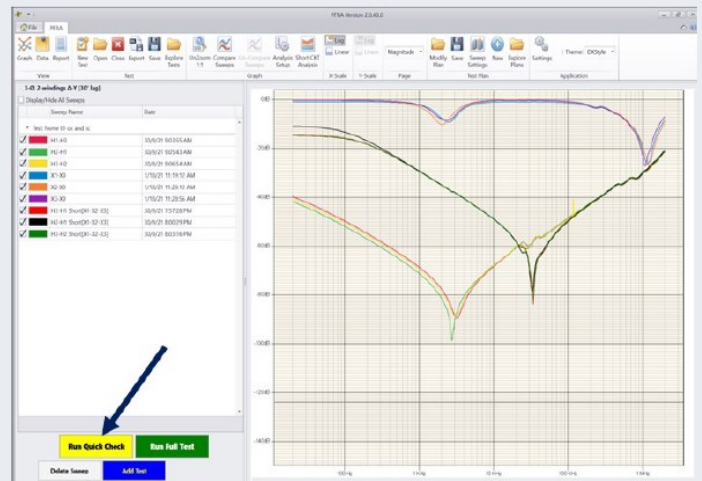
**IEEE and DL/T standard Visual Indications**

Comparison of traces with visual indication of Normal, suspect, severe and Obvious condition can be done per IEEE C57.149 and DL/T911 standard.



**Quick Test Function**

The PFRA's quick test feature can scan the trace in under 6 seconds to confirm that the connections to the instrument are good. Any wrong, loose, or bad ground connections can be detected quickly if the quick test scan does not show the expected trace shape or shows a noisy trace.



**Test Data Import Feature**

The PFRA software can import test results of all other manufacturers of SFRA instruments. It can also import test results in IEC, CIGRE or CSV format.

**Test Report Customization**

Test reports can be customized with a custom header and logo.

**PDIC**  
POWER DIAGNOSTIC INSTRUMENT COMPANY

Test: 2017-04-14 15:20:10 Shop transformer #2 1 ph 2 wdg      Type: 1-0, 2 windings

---

Company:	Designation: Lab use
Manufacturer: Howard Industries	Date of Mfr: 1997
Vector Group: Single Phase	KV: 466454 123 456
Impedance %: 5%	MVA: 123 456 789
Substation: Shop	Type: Pole Mount
Serial Number: 466454	Transformer ID: shop sample

---

DETC pos: N/A	Weather: Nice
Air Temp: 72F	Cooling: Air
Top oil temp: 71F	Oil Status: Full
LTC pos: N/A	% RH: 20%
Tested By: HN	



### Fastest Sweep Time

The lightweight, field-portable PFRS-25 single box instrument diagnoses transformer mechanical integrity. It provides precise measurement accuracy of  $\pm 0.1$  dB for all ratios between +10 dB and -60 dB, and  $\pm 0.3$  dB for ratios above -60 dB. The PFRS-25 has the fastest sweep time of all contemporary SFRA instruments at under 20 seconds (20 Hz–2 MHz), minimizing transformer testing time.

### Computer Interfaces

Bluetooth enables users to be away from the instrument and transformer under test. This feature is useful in bad weather. User can be away from instrument while the PFRS-25 instrument can be placed on the transformer. The unit displays a connection status on the front panel and in the software. Standard USB 2.0 is also included.

### Optional Battery Backup

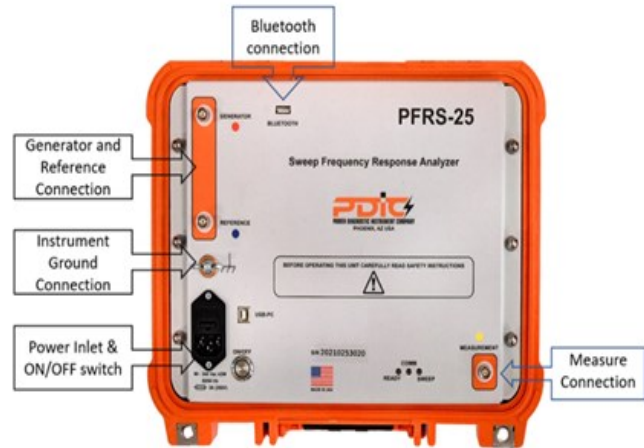
Built-in battery backup is useful option when AC power is unavailable. Users can test for 4 hours without recharging the 12 V, 3 AH battery. While the battery charges, the instrument can be used with AC power. When connected to the instrument, the software displays battery charge level.

### Clamps and Test Cables

All bushing connections can use simple universal C clamps with BNC connectors. They easily accept flat and round bushing terminations. Similar ground clamps make ground braid hookup easy. Alternatively, the test kit also comes with an option of integrated test leads with alligator clips upon request.

### Documentation

Each instrument comes with a manual. The instrument lid has a quick start guide sticker. A quick start guide gives short circuit and open circuit test connection information and shows how to create proper connections.



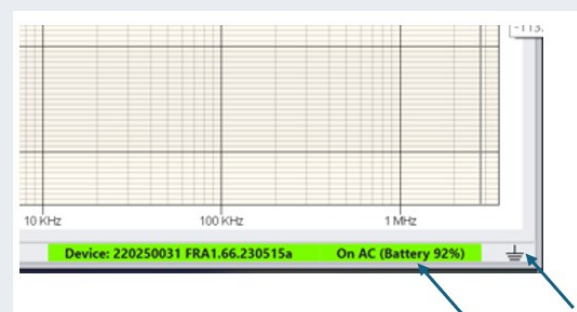
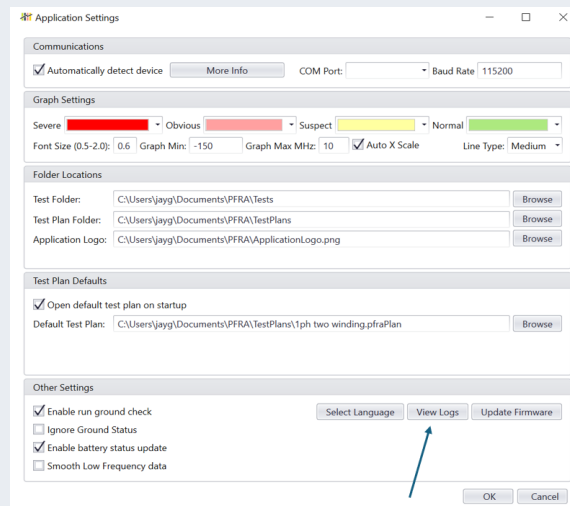
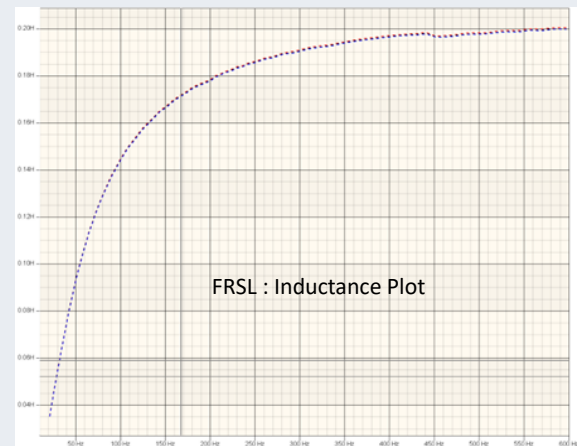
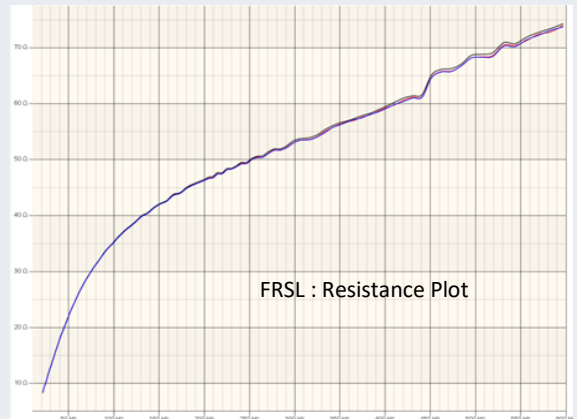
### Frequency Response Stray Loss (FRSL)

FRSL (Frequency Response Stray Loss) is a cutting-edge electrical test method incorporated into PFRS-25 software, meticulously designed to swiftly identify intra-strand short-circuits and overheating within transformer windings. With FRSL, AC resistance is precisely measured across discrete frequencies ranging from 15 to 400 Hz, allowing for pinpoint accuracy in detection. Through intuitive visual analysis, deviations indicative of strand-to-strand short-circuits are promptly identified, empowering proactive maintenance initiatives. Recommended for commissioning or acceptance tests, FRSL provides vital insights into transformer health. More over, results are validated through cross-checking with Dissolved Gas Analysis (DGA), ensuring a comprehensive assessment and facilitating the implementation of optimized performance management strategies

### PFRS-25 : Instrument Diagnostic

Our innovative instrument features built-in diagnostics, facilitates the users to monitor the test and the performance of PFRS. The advanced software that comes with PFRS-25 monitors the data quality for all parameters, enabling the users to meticulously analyze data from each measurement channels, ensuring the optimal quality of acquired data. Additionally, the software continuously monitors the performance of battery charge level and conveniently displays the status of battery charge on the home screen. The battery level indicator employs a color-coded system (green, yellow, or red) based on charge level, providing intuitive feedback for seamless operation.

The software employs advanced tools to continuously monitor the PFRS-25 hardware to assist the users in diagnosing events of inadequate performance. The latest design of PFRS-25 ensures that the quality of ground is always monitored not only prior to the test but also during the test. Moreover, the software logs all activities and messages exchanged between the instrument and software, aiding users in diagnosing any issues if the instrument does not perform as expected in the field. The overall design of the PFRS-25 can diligently monitor the ground integrity and displays status of ground integrity on home screen ensuring performance of SFRA test with high standards of quality.



**Technical Specifications**

<b>General</b>	AC Power Supply	90 – 264 V AC, 47 – 63 Hz
	Internal Battery	3.2 Ah, 38 Watts (up to 4 hours of operation)
	Dimensions	13" x 11" x 6" (34 cm x 29 cm x 15 cm)
	Weight	10.0 lbs. (4.5 Kgs) in the field rugged ABS Enclosure
	Transportation Case	31.0 lbs (14 Kgs) 20" x 15" x 10" (50 cm x 37 cm x 25 cm)
<b>Standards</b>	EMC	EN 61326-1:2013, EN 55011/CIS PR 11 (2010), ANSI C63.4 (2014)
	LVD	IEC 61010-1 EN 61010-1 UL 61010-1
	Safety	IEC 26068-2-27,
<b>Measurement</b>	Frequency Range	0.1 Hz – 32 MHz, user selectable
	Frequency Resolution	0.01% OR 0.001Hz
	Frequency Accuracy	0.01% (measurement error)
	Level Resolution	0.0005 dB
	Number of Points	Default 1046, Up to 42 000 points, user selectable
	Measurement Time	< 20 S, fast setting 6 S (20 Hz – 2 MHz)
	Points Spacing	Log, linear, or both
	Sweep Settings	10 Hz to 2 MHz
	Internal Noise Level (average)	> 140 dB
	Dynamic Range	> 150 dB
	Accuracy	±0.1 dB from +10 to -60 dB and ±0.3 dB (min) below -60 dB
<b>Communication</b>	PC Communication	USB and Blue Tooth. Includes PC software
<b>Analog Input</b>	Channels	1
	Compliance Voltage	0.2 – 24 V p-p
	Measurement voltage at 50 Ω	0.1 - 12 V p-p
	Channel Protection	Short-circuit and over voltage protection
	Sweep Direction	Low to high or high to low (user selectable)
	Frequency Range	0.1 Hz – 32 MHz, user selectable
<b>Analog Output</b>	Channels	2
	Sampling	Simultaneous
	Frequency Range	0.1 Hz – 32MHz
	Input Impedance	50 Ω
	Sampling Rate	100 MS/s
<b>Environment</b>	Ambient Temperature	Operating: -26°C to +55°C (-14°F to +131°F)
		Storage: -35C to +70°C (-31°F to +158°F)
	Humidity	< 95% RH, non-condensing